



**THE
JUNE CANAVAN
FOUNDATION**

February 2012 Newsletter

Hello everyone,

Welcome to the first June Canavan Foundation newsletter for 2012. This edition will cover the following topics:

- Invitation – Annual Foundation dinner
- 2nd anniversary – Port Moresby
- June's home at Diddillibah - sold at auction
- A new era for the surgery
- Which projects will the Foundation support in 2012?
- Cycling in the Far North – fun and fundraising
- Thayssa's graduation "letter to June" speech in Lausanne

Invitation

June Canavan Foundation Annual Dinner

We have decided to hold an Annual dinner to enable June's family, friends, patients and colleagues to reconnect with each other. This year's Foundation Dinner will be held as follows:

Phon's Thai Restaurant, Cotton Tree
17th March 2012 at 7.00pm

Our guest speaker will be Kim Saville, Deputy Director of the School of St Jude. We welcome you and your friends to come along for an evening of good food, wine, entertainment and company. More details on page 6.

2nd ANNIVERSARY – PORT MORESBY

On 11 August 2011, the Australian High Commission of Papua New Guinea hosted a ceremony to unveil a permanent memorial for the thirteen people who lost their lives in the Kokoda crash two years previously. The memorial consists of a commemorative plaque, surrounded by a semi-circle of 13 baby Hora shrubs representing each of those who died. Hora is a native shrub with bright orange flowers. The



young shrubs will eventually grow into a solid low-lying semicircular hedge, linking the 13 souls together. The plaque faces directly towards Kokoda. Representatives of each family laid a wreath of brightly coloured native flowers around the plaque and planted one of the small Hora shrubs. High Commissioner, Ian Kemish delivered a moving speech which is attached to this email. We all agreed that the ceremony and the memorial were simple and meaningful – a fitting way to ensure a continuing link with the place where the spirits of June and the others remain.



CHARITY AUCTION - JUNE'S HOME at DIDDILLIBAH SOLD.

Over 100 people were at the auction of June's home in Kiel Mountain Road on 23 October 2011. June loved her country hideaway with its resident kookaburras, so it was with much sadness and many happy memories that we prepared the house for sale in the weeks beforehand. The auction was widely marketed as a "Charity Auction" and had received excellent coverage in the local mainstream print, radio and TV media. Although disappointed in the final sale price, we accepted that it was time to move on, and that we were selling in very low market conditions. We considered that it



was better for the Foundation to be able to start using the funds now, rather than waiting for an unknown time in the future where the house may have commanded a higher price. The large number of people also provided a great way of ensuring that many of June's possessions moved on to the next stage of their life via a "chattels" auction. We sold 139 boxes of household items and several pieces of furniture on the day. June's collection of aboriginal art and her rosewood furniture had significant reserve prices on them which were not met. Their sale will therefore be managed by specialist art and furniture professionals.



Channel 9's *Hot Property* show filmed the auction and the background story of June's life and fundraising. We are hoping this will provide good coverage of the Foundation. At this stage, the episode is expected to air in mid March, so I'll keep you posted once Channel 9 have decided on the actual screening date.

A NEW ERA FOR THE SURGERY

The surgery building has commenced its new life. Since 6 February it has been occupied by a local community service organisation called the CEA Group. The organisations within the group have been assisting disadvantaged people in South East Queensland since 1980. The group specialises in assisting youth, migrants, people returning to the workforce, people with disabilities, Indigenous people, ex-offenders and mature aged clients. CEA will use the surgery as an English Language centre for refugees, migrants and people who had to leave school earlier than they wanted to. This is a perfect match for the Foundation, providing us with an ongoing income stream, while offering a not-for-profit organisation with an excellent premises at below market rent.

If you have driven, ridden or walked down Duporth Avenue lately, you will have noticed that the surgery building has had a significant face-lift. It is now painted in the same colours as Jalloonda down the back and the church across the road – cream walls, red roof and green guttering. Low maintenance gardens will soon replace the lawn out the front. With new carpet inside and freshly painted interior walls, it is now looking very smart and ready for the next stage in it's life of making people's lives better.



CYCLING UP NORTH – FUN AND FUNDRAISING

After raising \$10,000 for the Alola Foundation from our Cycle Queensland ride in 2010, a group of 8 cycling fundraisers headed up to the Atherton Tablelands last September. One of the highlights of our trip was a visit to St Thomas' school at Mareeba. We rode our bikes into their outdoor assembly to talk to them about our ride and our fundraising for the School of St Jude. The St Thomas kids presented us with a cheque for \$2020 representing the proceeds of their fundraising over the last 12 months. We told them that June's Foundation would match their funds and send \$4040 off to the School of St Jude.

If you would like to purchase a bright yellow JCF cycling jersey for \$90.00 and / or join us on our next fundraising cycling trip, please let me know and I'll send you more details of either.



WHAT PROJECTS IS THE FOUNDATION SUPPORTING IN 2012?

June's Foundation is established as a "giving" Foundation rather than a "doing" charity. There are so many worthwhile projects being conducted out there that we do not want to re-invent the wheel. Our aim is to distribute money to projects and organisations which are aligned with the vision and mission of the Foundation.

Remembering that the vision is "June's spirit living on as an agent of change", we will always try to imagine what June would have wanted. Our mission gives us guidance on this. It is "Driving sustainable change to create wellbeing and justice through programs in sport, health, education and conservation". Given June's preference for addressing the cause of a problem, rather than the symptom, we have a particular leaning towards projects which encourage communities to create sustainable self sufficiency.

During this year, in addition to our longstanding relationship with the School of St Jude, we have also made a contribution to the Jannie Moala Foundation in support of their project to install a permanent weather station on the Kokoda track. The main agenda item for our next Board meeting on 26 February, will be to determine the other contributions we make in 2012. We have invited Stacey Thomas from our

philanthropic advisors, the Myer Family Company to attend our meeting. Stacey will work with the Board to determine the most appropriate organisations for us to fund on either an ongoing or one-off basis. Of course, we also welcome any ideas you have. Please let one of our Board members know of any projects of organisations which we may consider funding.

Our preference is that supporters of June's Foundation make a direct donation to the organisations which we support and then we will match your donation. You can make a donation directly to our current partners by accessing their websites as follows:

School of St Jude <http://www.schoolofstjude.org>
Alola Foundation: <http://www.alolafoundation.org>
University of the Sunshine Coast: <http://www.usc.edu.au/community/giving-to-usc/>

If you would like to contribute to the Jannie Moala Foundation, please write a cheque to the Jannie Moala Foundation and send it to our office.

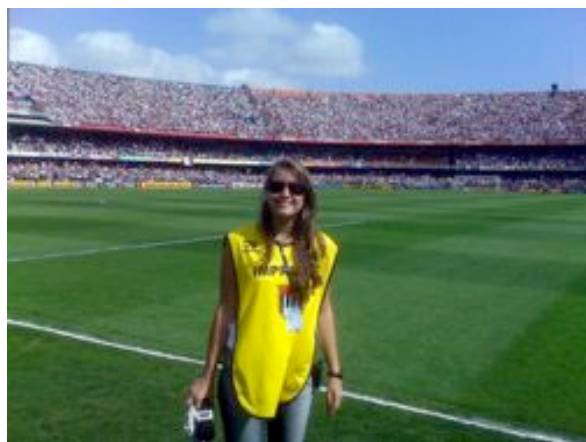
For those of you who would prefer to contribute directly to the June Canavan Foundation, tax deductible donations can be made by a cheque made out to the June Canavan Foundation and sent to the JCF office below, or you can make a direct bank deposit into the following account:

BSB: 064 000
A/C: 1254 9247
Name: June Canavan Fundraising
Reference: Your name

If you would like a tax deductible receipt, make sure you send me an email with details of the donation and your mailing address.

THAYSSA'S GRADUATION IN LAUSANNE – HER SPECIAL "LETTER TO JUNE"

Thayssa Plum from Brazil was the inaugural recipient in 2011 of the *Future Female Sports Leader* scholarship, funded by the June Canavan Foundation and supported by the Lausanne Network for Women in Sport. During her Graduation Ceremony at the Olympic Museum in Lausanne, dressed in bright yellow, Thayssa delivered a moving speech in the form of a "letter to June" which you can access at the following link: <http://www.youtube.com/watch?v=YprNZgoWPu4&feature=youtu.be>



For those who cannot access the speech on-line, Thayssa finished with the following words:

June, the scholarship that bears your name keeps you alive. This whole year I have felt stronger because you were with me. And I know June that you will always be there for me. I will bring your memory and your ability to inspire women back with me to Brazil. There I will do everything in my power to provide ethical sports leadership and engagement projects to change the lives of women. Your dream, my dream, our dream. I want to create a virtual cycle where women in sports contribute to the future of other women in sports. And guess what June? They all wear yellow, the colour of happiness. Aren't we lucky? Thank you so much June. Love, Thayssa.

Thayssa was a worthy recipient of the first *Future Female Sports Leader* scholarship. We wish her well and look forward to hearing of her endeavours as she assists her country Brazil on their journey towards hosting the 2016 Olympic Games in Rio de Janeiro.

ANNUAL DINNER – FUNDRAISING FOR THE SCHOOL OF ST JUDE

Come along for a night of good food, good wine, good entertainment and good company.

Phon's Thai Restaurant
55 Cotton Tree Parade, Cotton Tree

At 7.00pm
Saturday 17th March

Our guest speaker for the evening will be Kim Saville, Deputy Director of the School of St Jude. Kim established the school with Gemma Sisia in 2002 and has worked alongside her for the whole decade of the school's contribution to the education of Tanzania's future leaders. Kim will talk about the school's achievements, and future plans to continue their mission of fighting poverty through education.

Other highlights of the evening will include:

- the auction of 10 dozen of June's eclectic wine collection
- the auction of a range of other products and services from local Sunshine Coast businesses
- an update on the current and future activities of the June Canavan Foundation.
- the presentation of an annual donation to the School of St Jude from the JCF.

Guests are invited to wear something yellow in memory of June

Dinner tickets are now on sale for \$75.00.

Good quality wine will be on sale during the night, or you can bring along your own drinks.

Please respond to Maureen Cummings on mcummings@scgs.qld.edu.au or 0413 617 148 before 4th March if you are coming to the dinner.

Please make payment by one of the following options:

By cheque:	By cash:	By direct deposit:
<i>To: June Canavan Foundation</i> Post or drop in at 90 Duporth Avenue, Maroochydore	To Maureen Cummings or Lynn Forsyth Drop it in at 90 Duporth Ave, Maroochydore	BSB: 064 000 A/C: 1254 9247 Name: June Canavan Fundraising Reference: Your name

That's it for this edition – if you have any suggestions or comments please let me know on 0409 813 260 or at annegripper@me.com.

Bye for now,



The June Canavan Foundation – 90 Duporth Avenue, Maroochydore Qld 4558 – 0409 813 260